

Employment Report

First half of 2020

Labour market key indicators

Lisbon, October 2020



Macroeconomic framework

Production, demand and prices

GDP AND MAIN COMPONENTS OF EXPENDITURE – ANNUAL PERCENTAGE RATE OF CHANGE (EXPENDITURE APPROACH, RATE OF CHANGE IN VOLUME)

	2020		2019				2019	2018
	Q2	Q1	Q4	Q3	Q2	Q1		
GDP (EU)* (a)	-14,0	-2,5	1,1	2,1	1,3	1,7	2,8	2,1
GDP pps (PT) (b)	-16,3	-2,3	2,2	1,9	2,1	2,4	2,2	2,6
Domestic demand	-12,0	-1,2	1,1	3,4	3,1	3,7	2,8	3,1
Final consumption expenditure of resident households	-12,3	-0,7	1,9	2,3	1,7	2,1	2,0	2,5
General government final consumption expenditure	-10,8	-3,5	-2,0	8,2	9,6	11,4	6,6	6,2
Gross capital formation	-39,5	-5,1	6,2	2,2	2,6	3,9	3,7	4,5
Gross fixed capital formation	-29,9	-2,5	3,6	5,7	4,9	7,1	5,3	5,7
Exports of goods (FOB) and services	-16,3	-2,3	2,2	1,9	2,1	2,4	2,2	2,6
Imports of goods (FOB) and services	-12,0	-1,2	1,1	3,4	3,1	3,7	2,8	3,1
External balance of goods and services as a % of GDP	-12,3	-0,7	1,9	2,3	1,7	2,1	2,0	2,5

* At the present date, this information refers only EU 27.

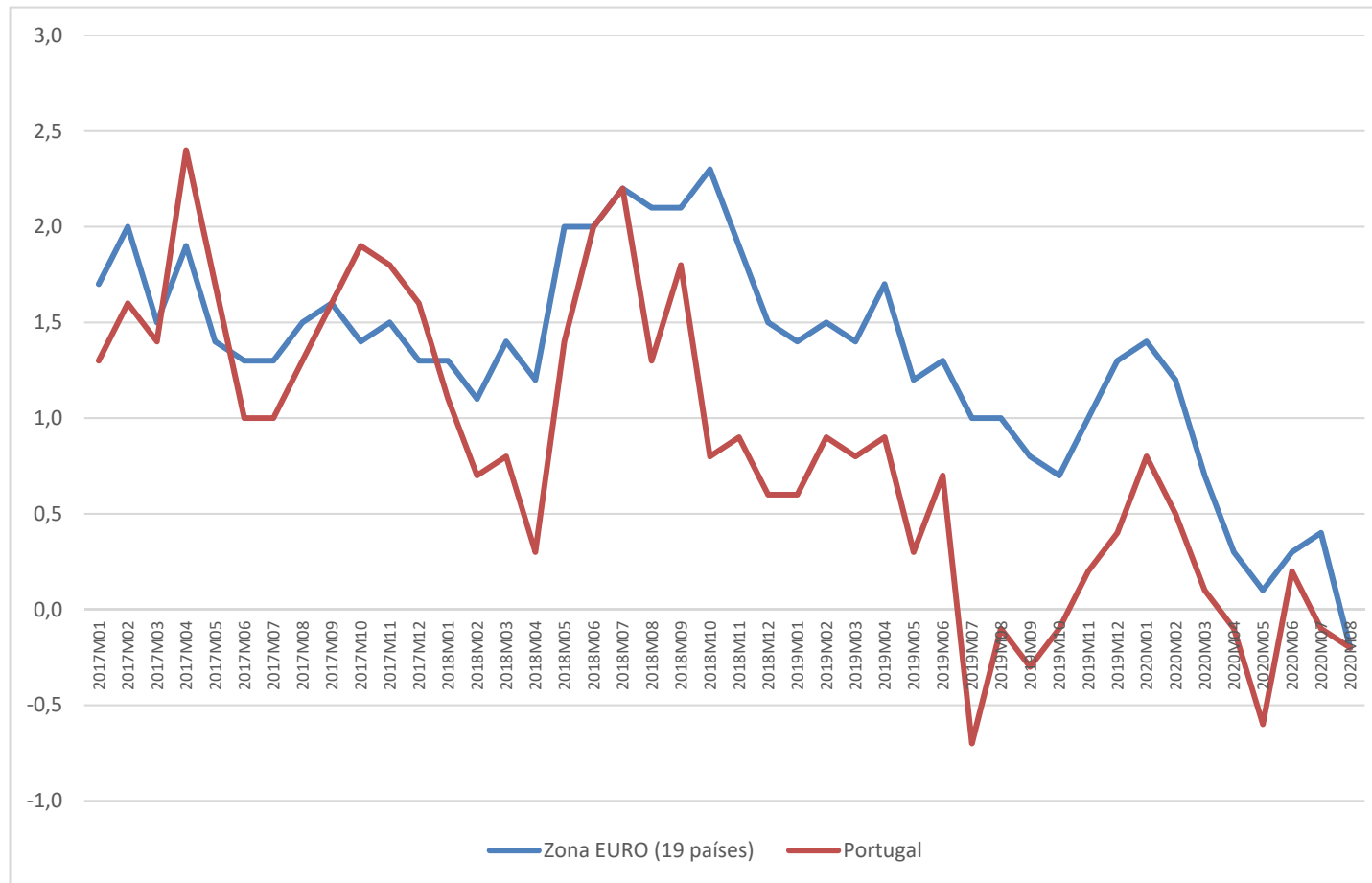
Source: Table (a) EUROSTAT (Table [nama_10_gdp] and [namq_10_gdp]); (b) INE, National accounts (reference year: 2016).



Macroeconomic framework

Production, demand and prices

Harmonised Index of Consumer Prices – Annual rate of change (Monthly data)



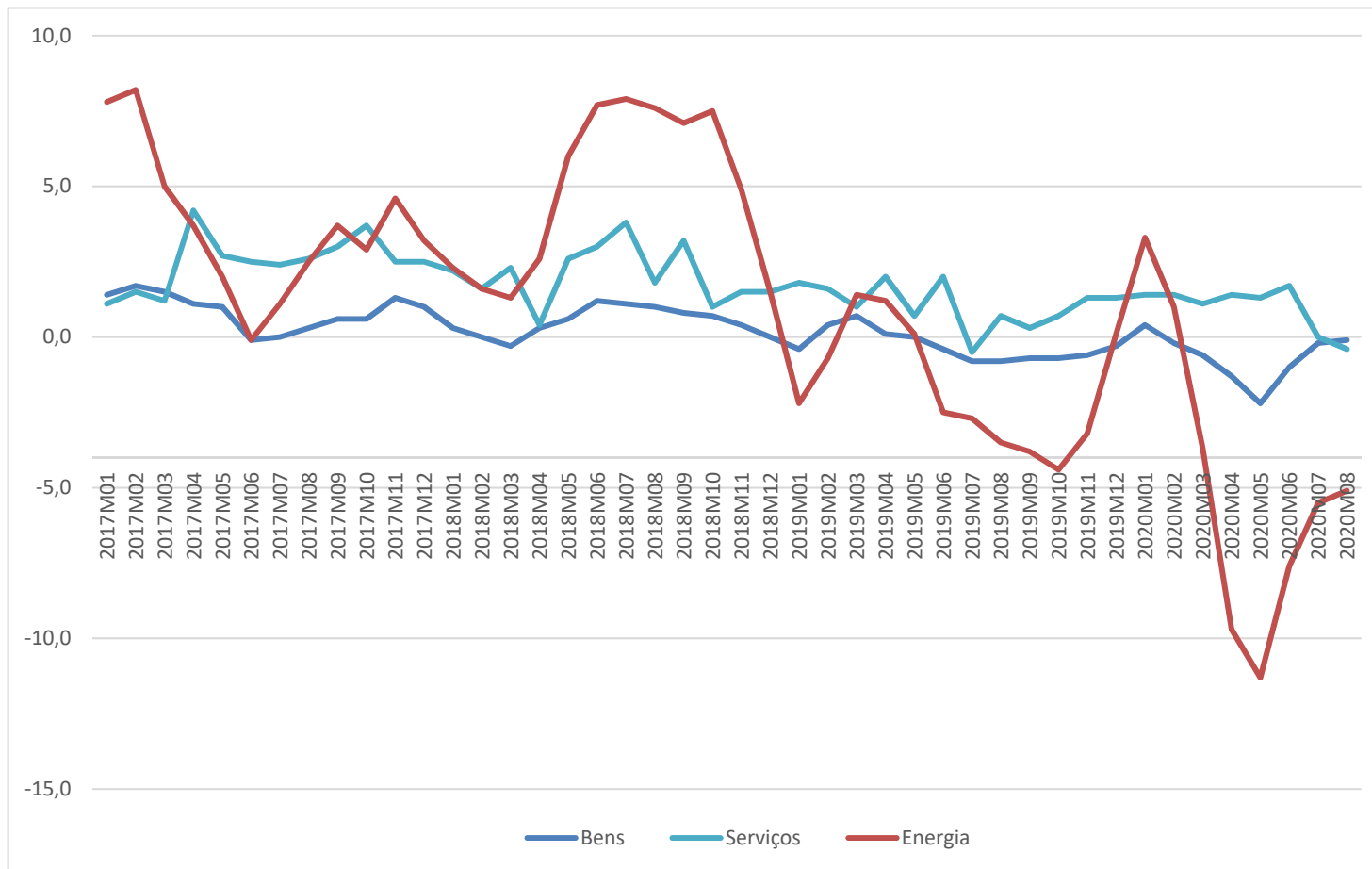
Source: EUROSTAT, table [prc_hicp_manr].



Macroeconomic framework

Production, demand and prices

Harmonised Index of Consumer Prices – Annual rate of change (Monthly data)



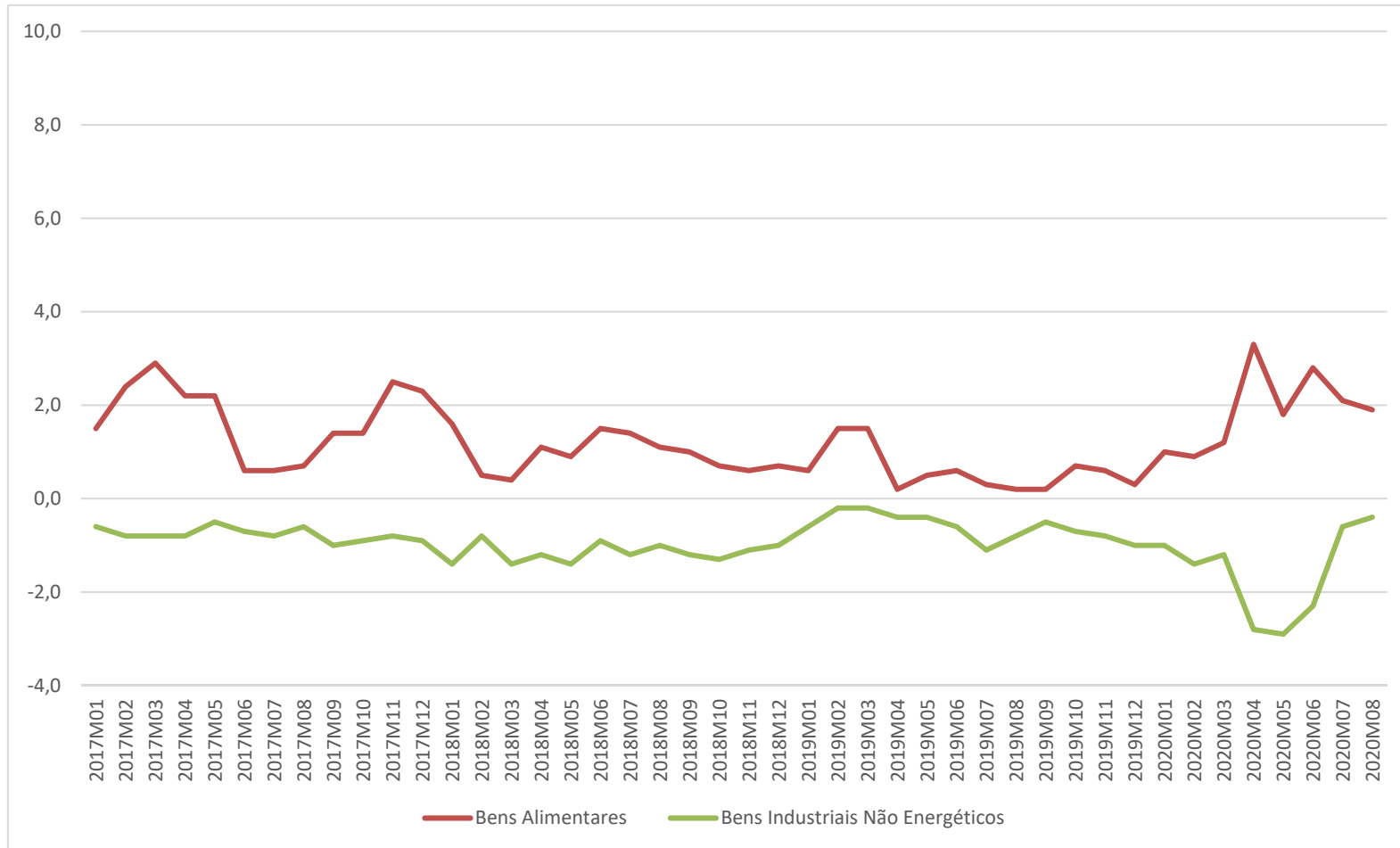
Source : EUROSTAT, table [prc_hicp_manr].



Macroeconomic framework

Production, demand and prices

Harmonised Index of Consumer Prices – Annual rate of change (Monthly data)



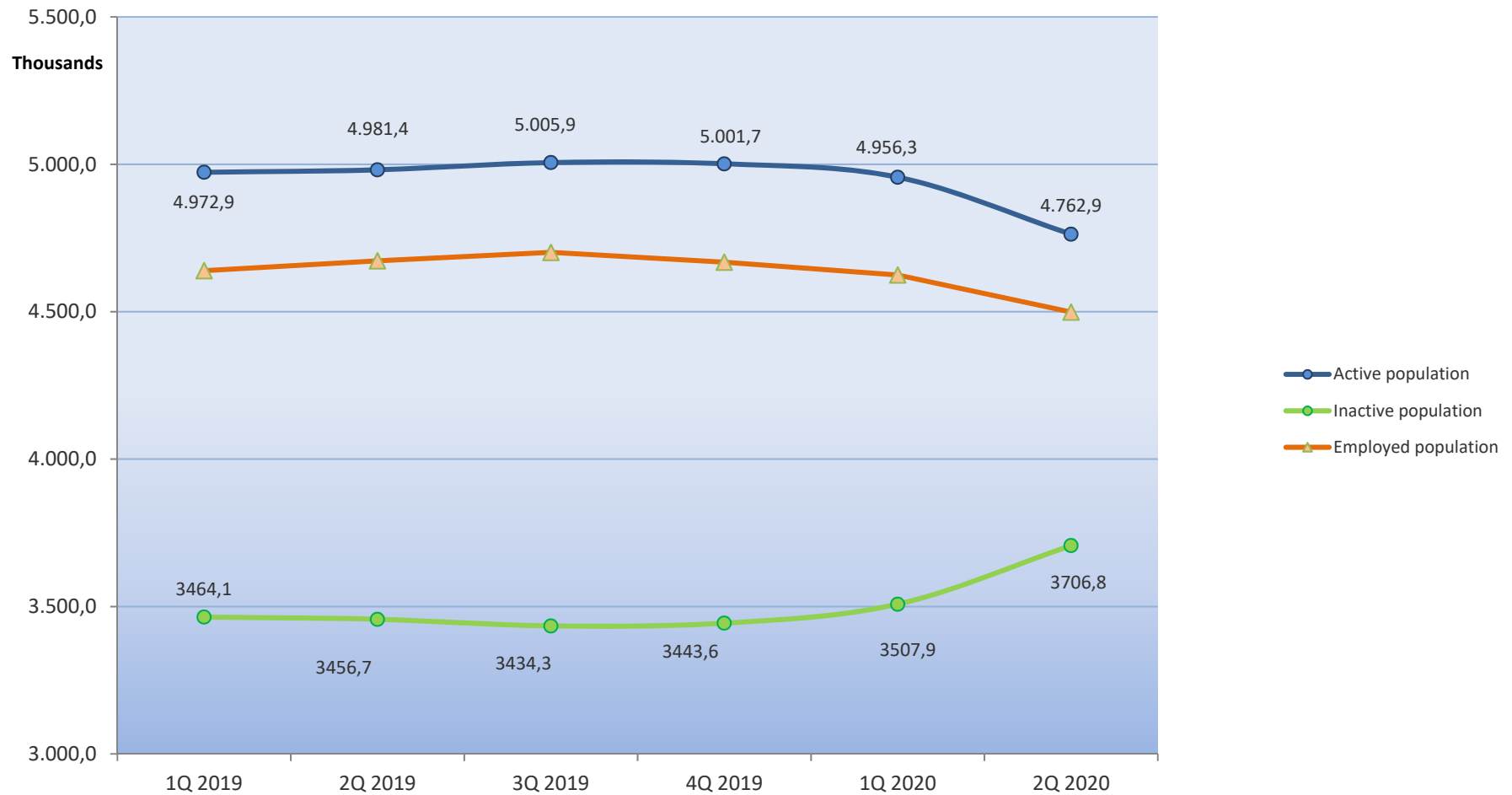
Source : EUROSTAT, table [prc_hicp_manr].



LABOUR MARKET

Activity, employment and unemployment

Active, inactive and employed population



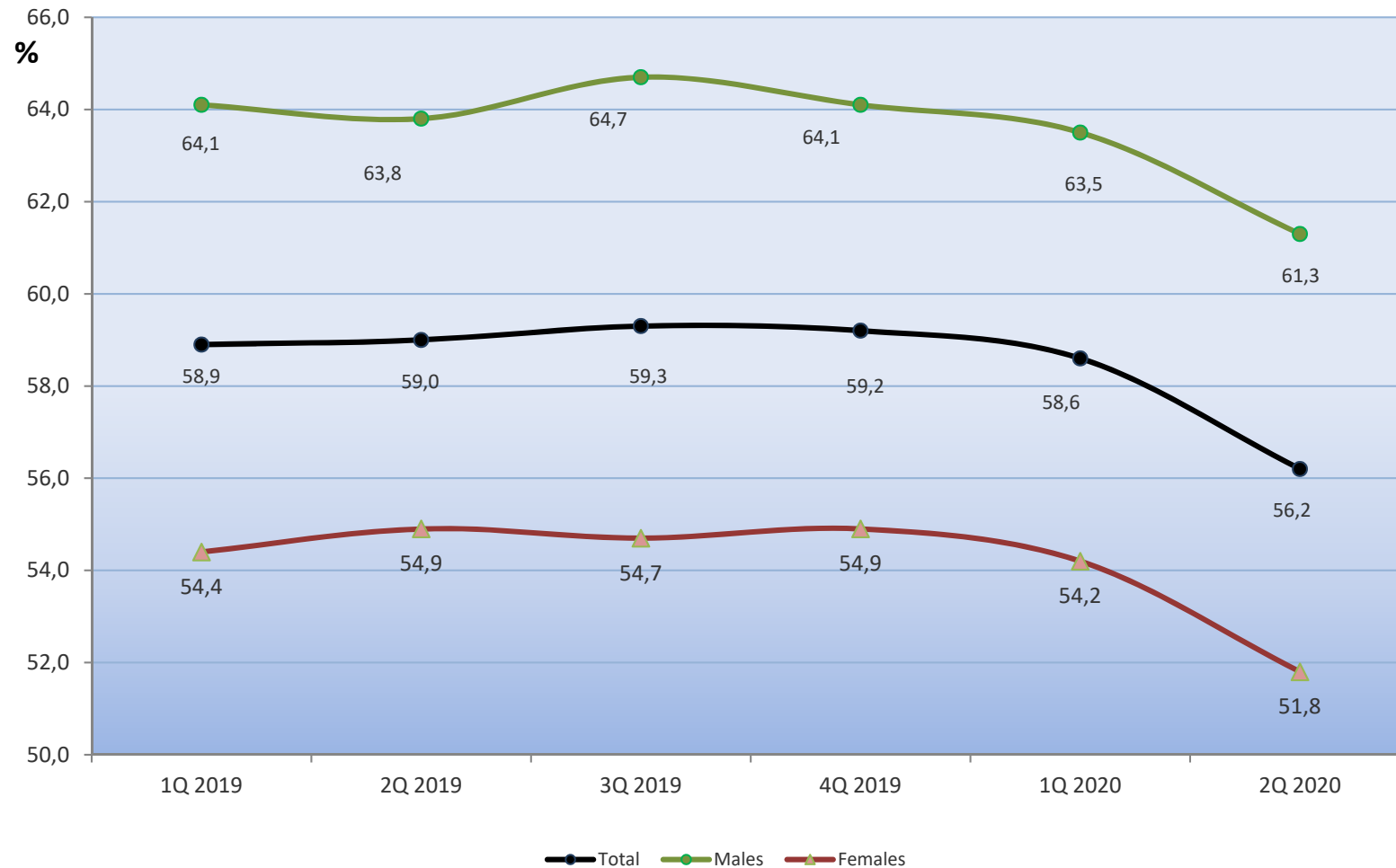
Source : INE, Labour force survey



LABOUR MARKET

Activity, employment and unemployment

Activity rate (as % of the population aged 15 to 64)



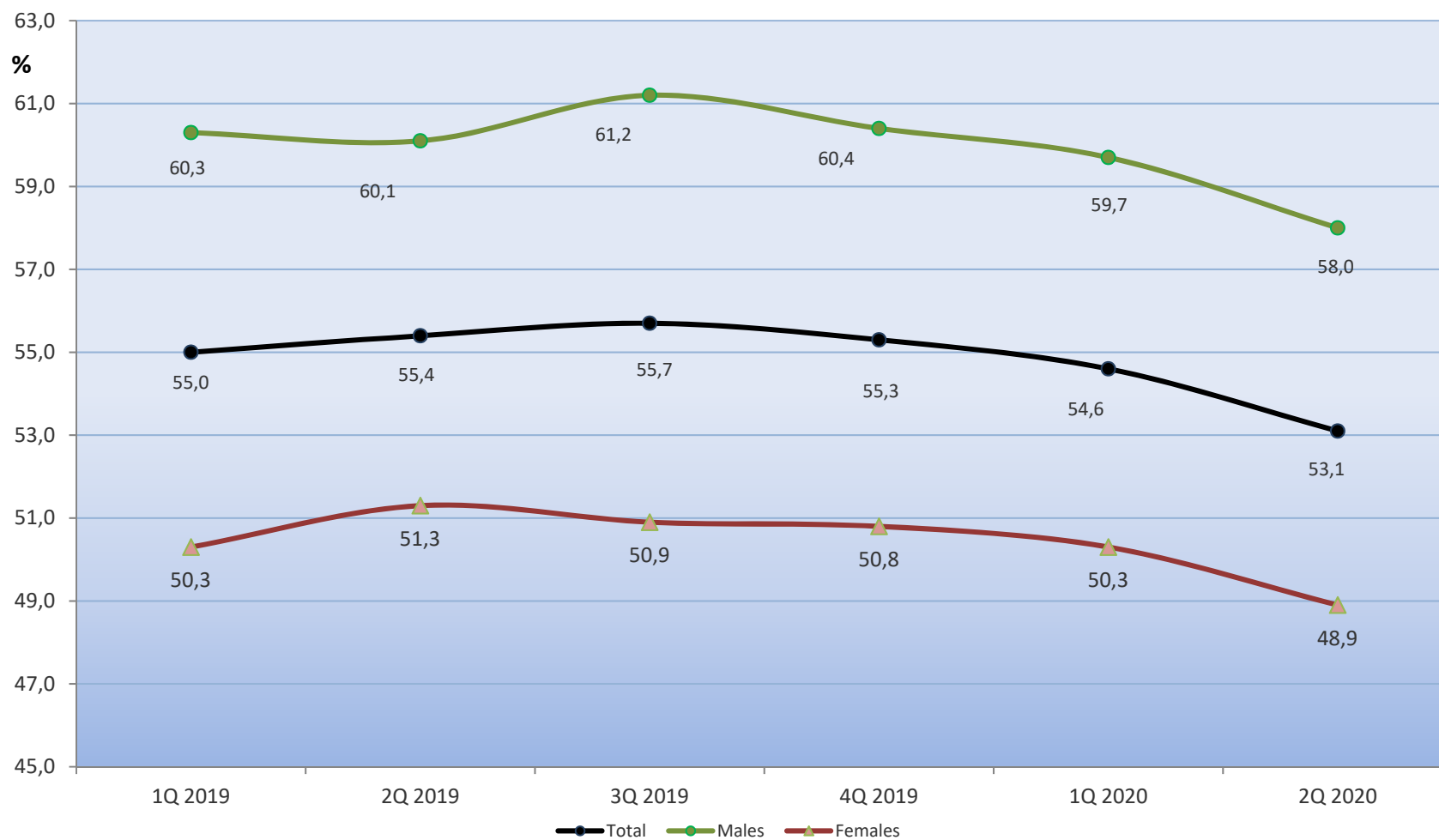
Source : INE, Labour force survey



LABOUR MARKET

Activity, employment and unemployment

Employment rate (as % of the population aged 15 to 64)



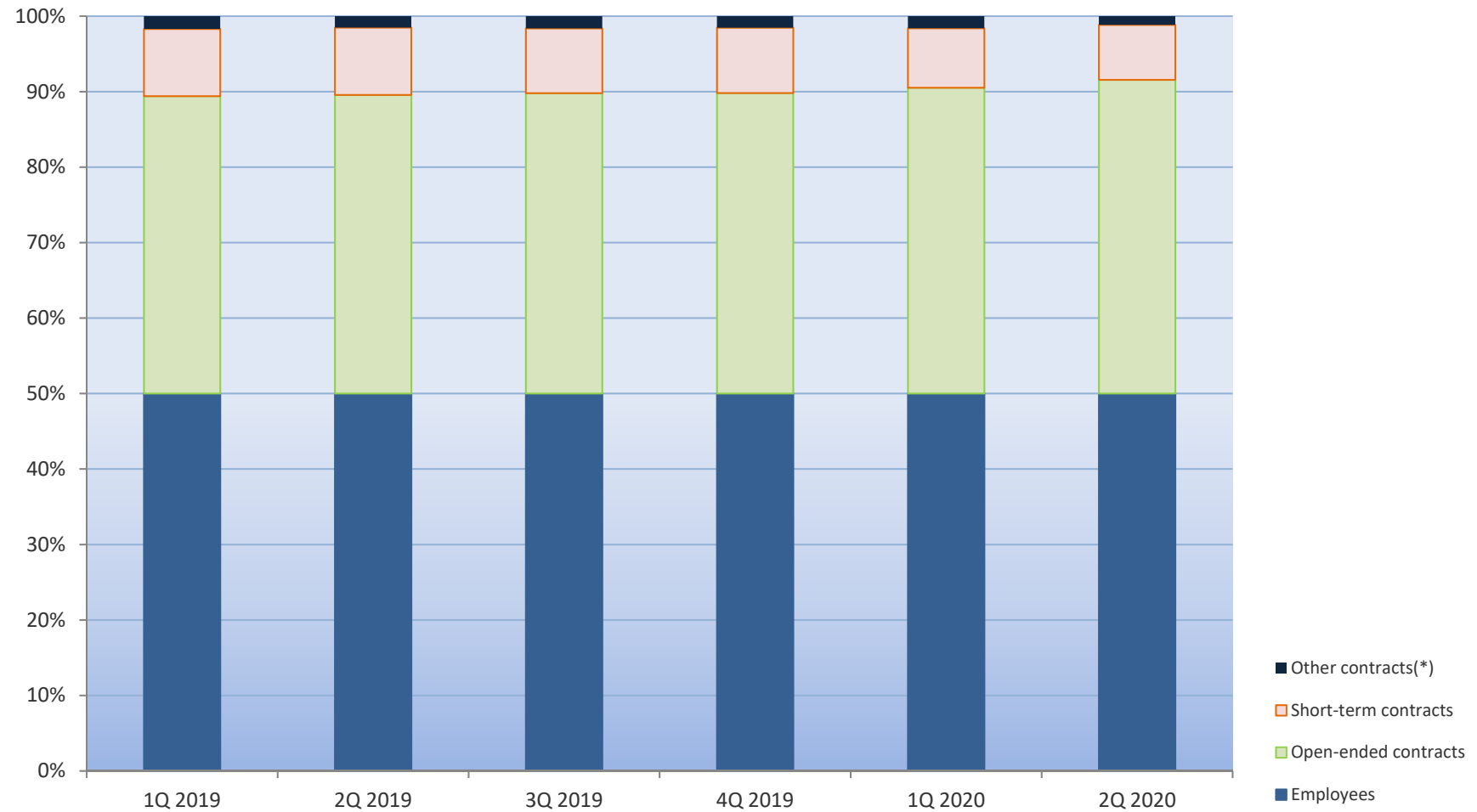
Source : INE, Labour force survey



LABOUR MARKET

Activity, employment and unemployment

EMPLOYEES BY TYPE OF CONTRACT



Note: * Other contracts include seasonal, occasional and service contracts.

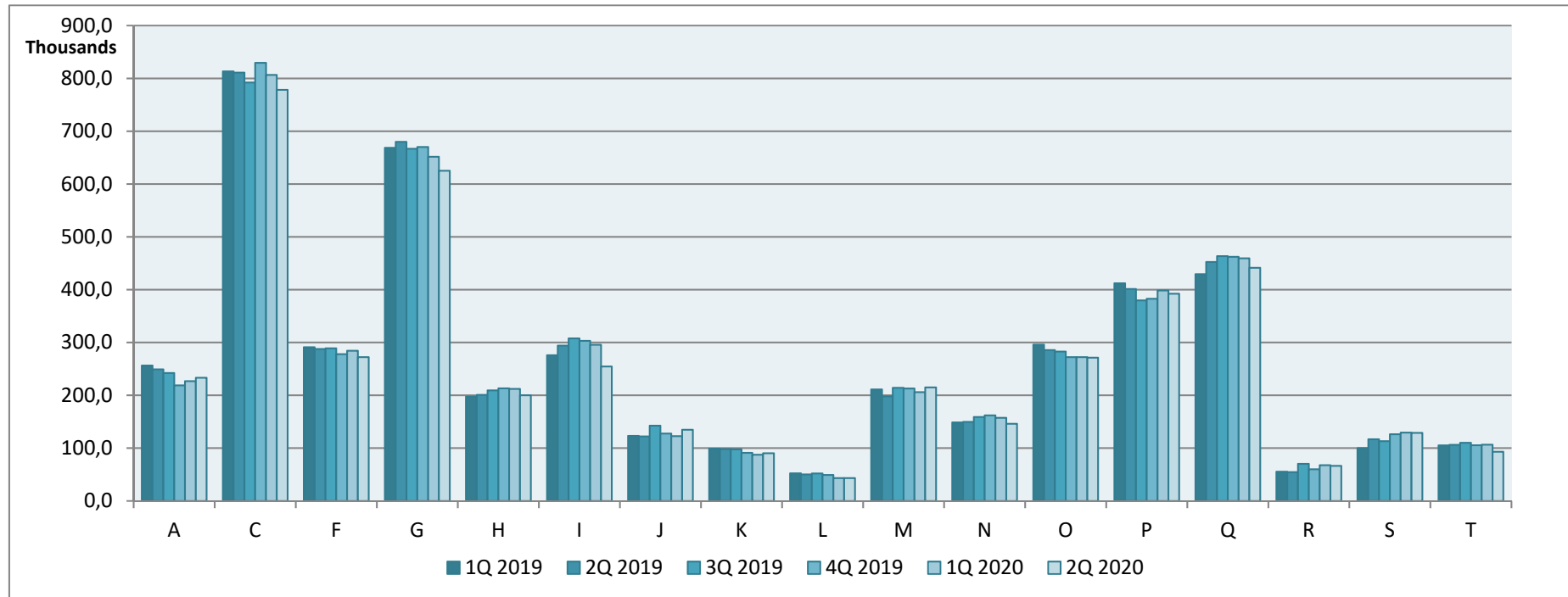
Source : INE, Labour force survey



LABOUR MARKET

Activity, employment and unemployment

POPULATION EMPLOYED BY SECTORS OF ACTIVITY



- | | | | |
|---|--|---|--|
| A | Agriculture, forestry and fishing | M | Professional, scientific and technical activities |
| C | Manufacturing | N | Administrative and support service activities |
| F | Construction | O | Public administration and defence; compulsory social security |
| G | Wholesale and retail trade; repair of motor vehicles and motorcycles | P | Education |
| H | Transportation and storage | Q | Human health and social work activities |
| I | Accommodation and food service activities | R | Arts, entertainment and recreation |
| J | Information and communication | S | Other service activities |
| K | Financial and insurance activities | T | Activities of Households as Employers; Undifferentiate Goods and Services Producing Activities of Households for Own Use |
| L | Real estate activities | | |

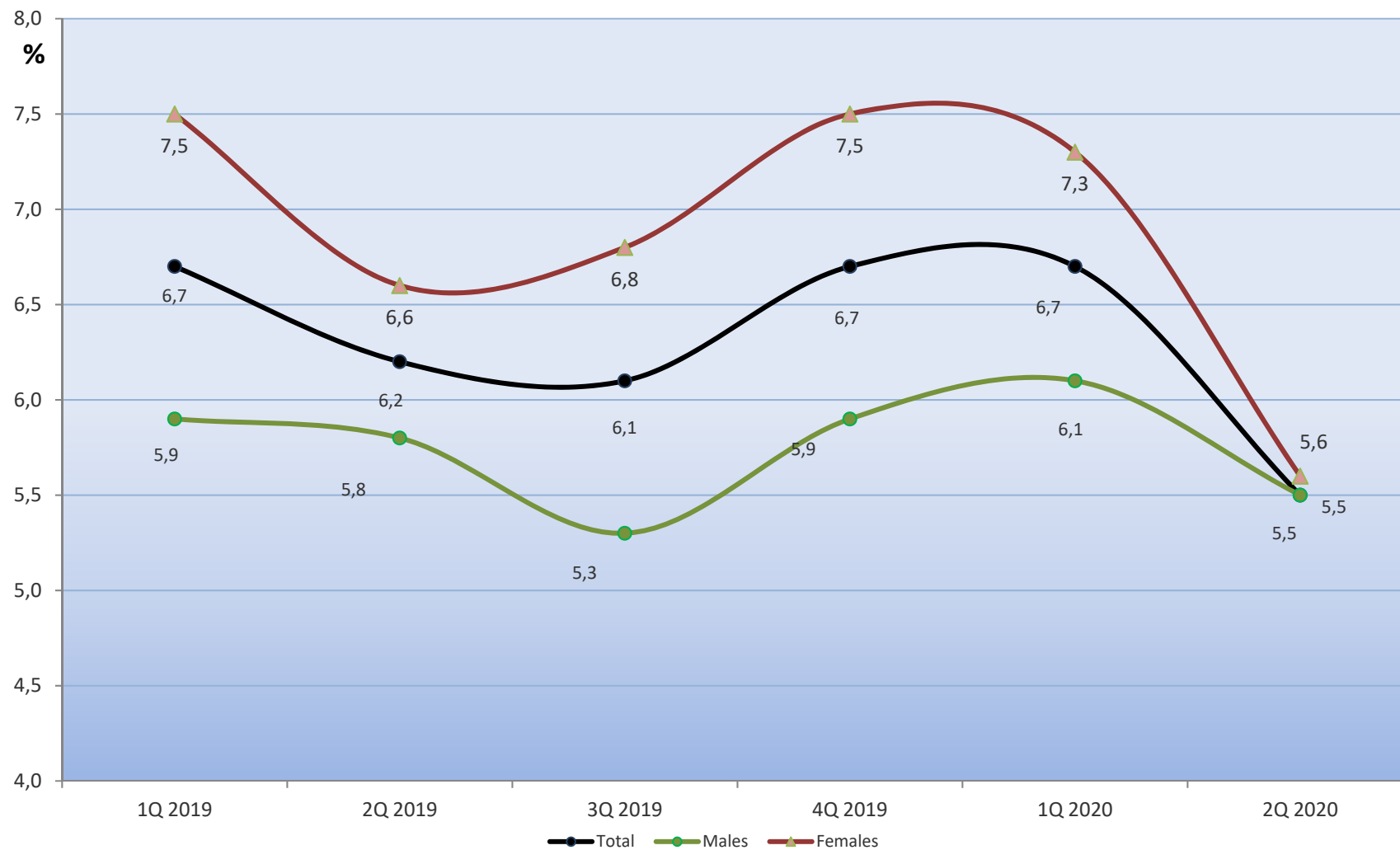
Source : INE, Labour force survey



LABOUR MARKET

Activity, employment and unemployment

Unemployment rate (as % of the population aged 15 and over)



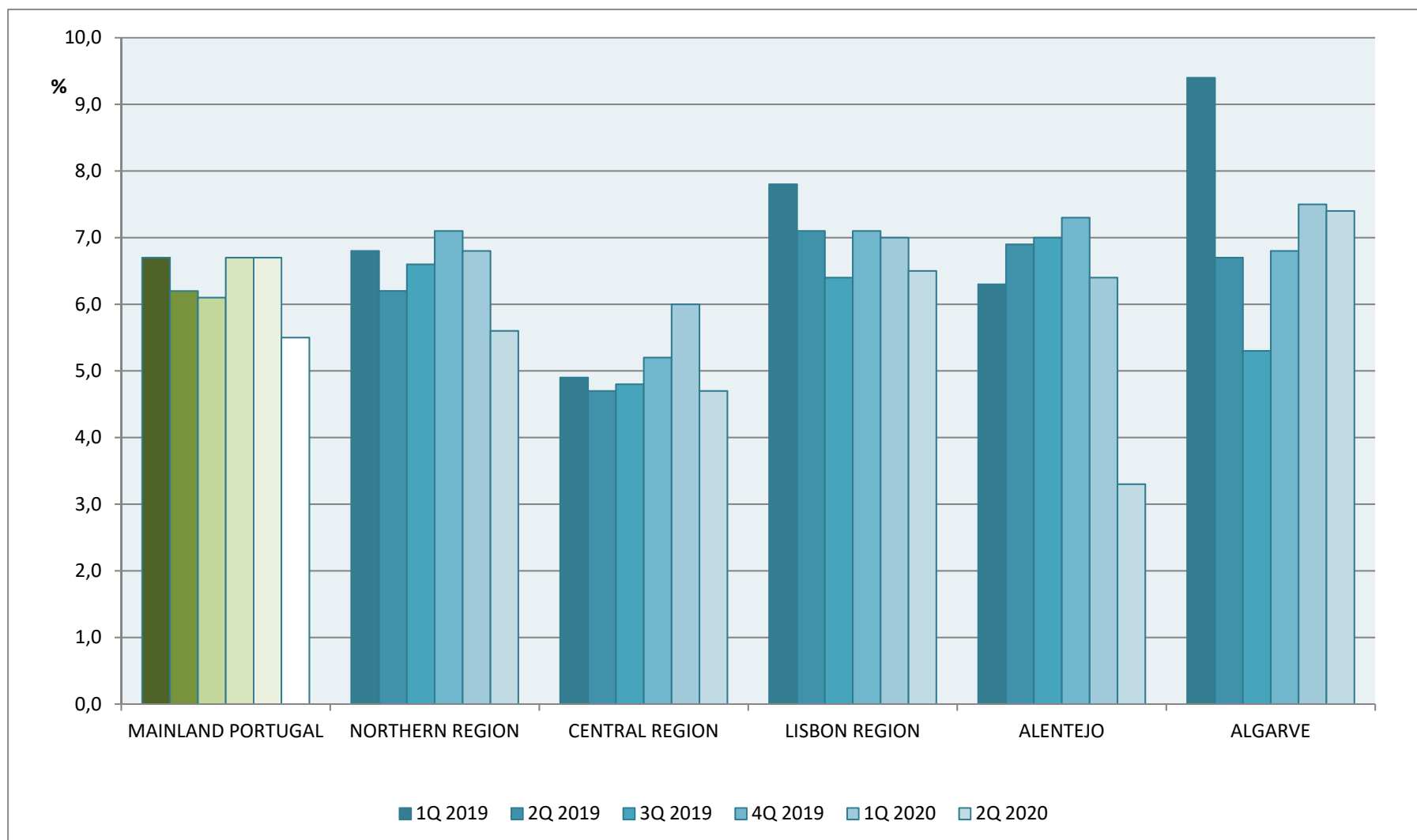
Source : INE, Labour force survey



LABOUR MARKET

Activity, employment and unemployment

Unemployment rate by region



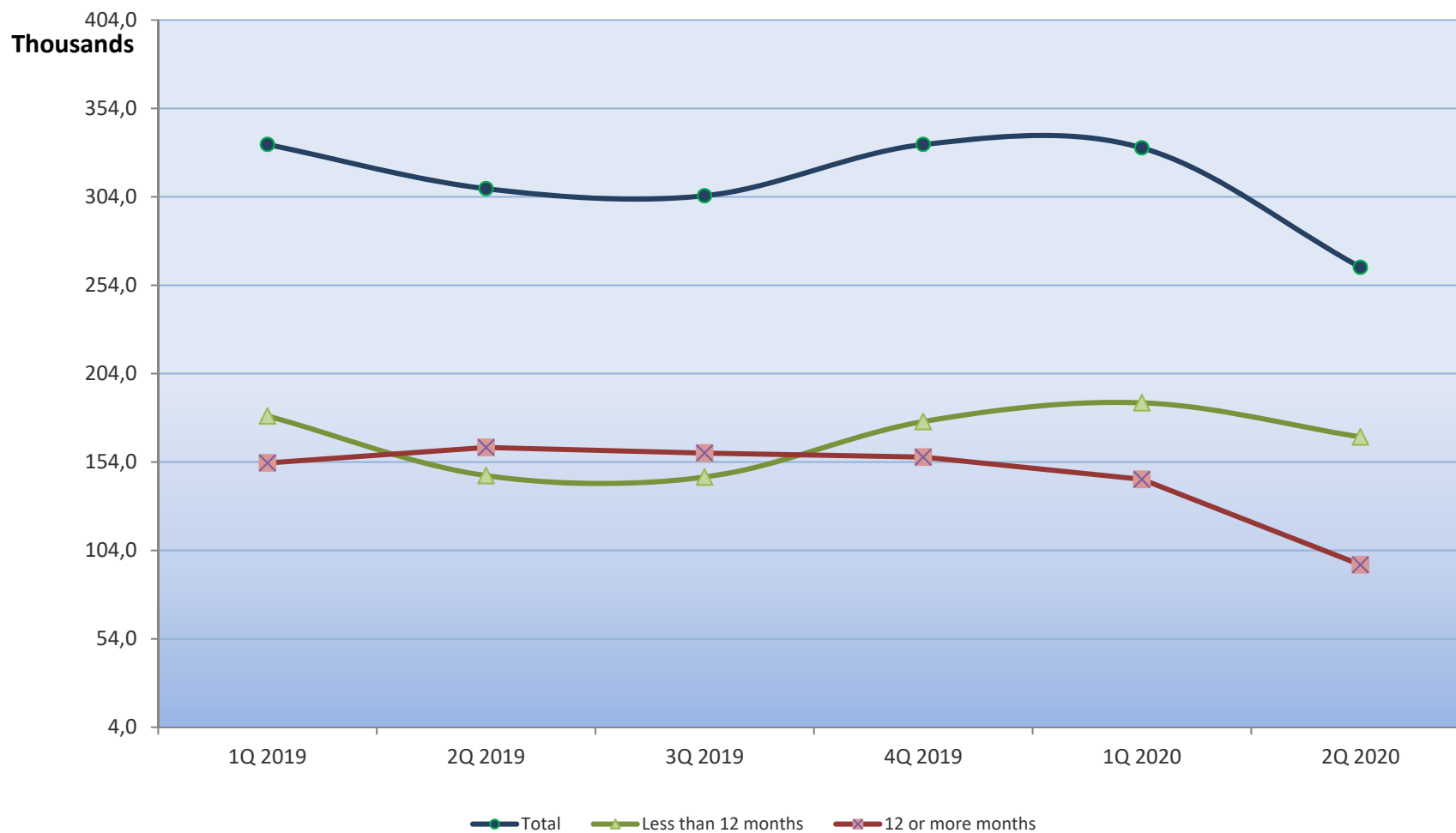
Source : INE, Labour force survey



LABOUR MARKET

Activity, employment and unemployment

UNEMPLOYED POPULATION BY DURATION OF JOB SEARCH



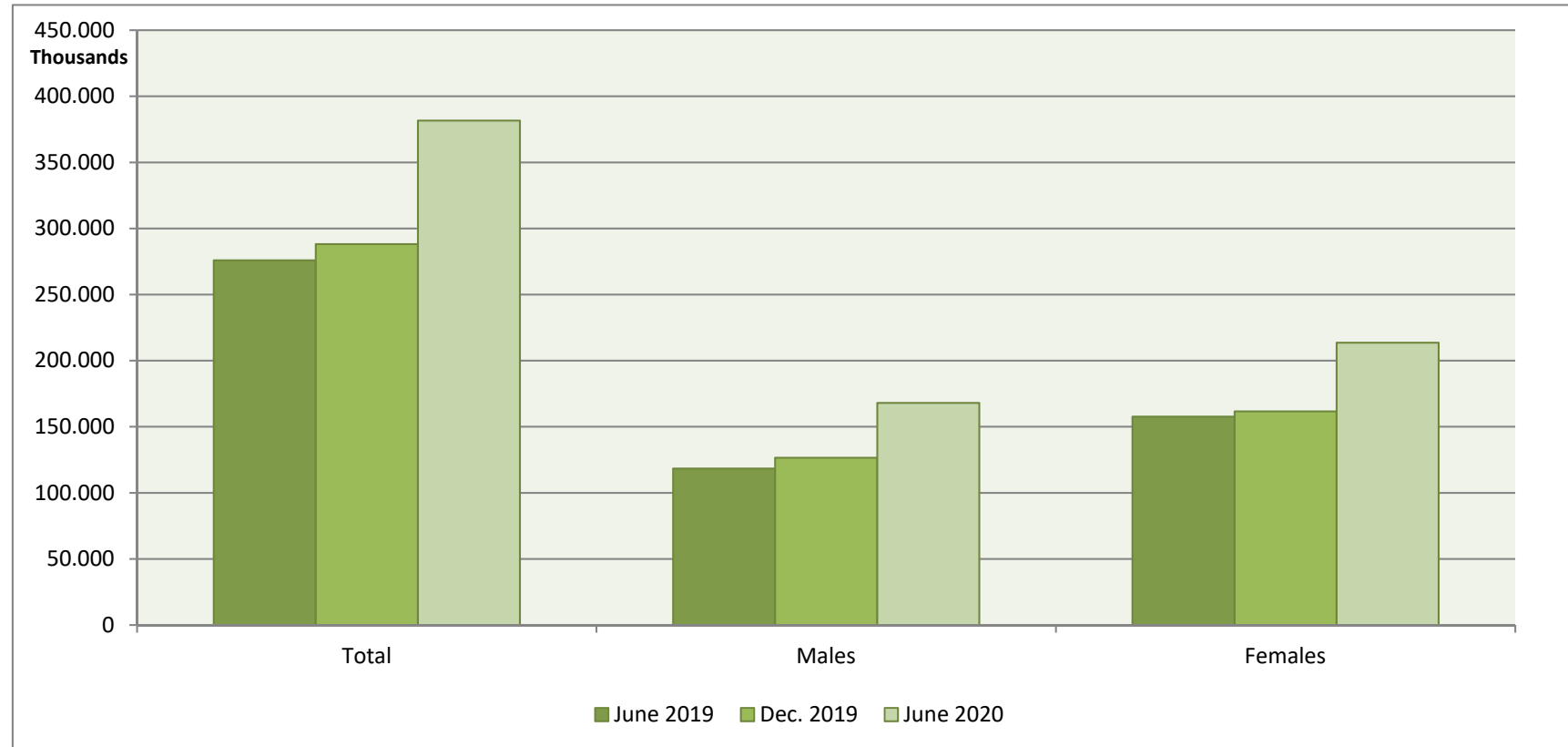
Source : INE, Labour force survey



LABOUR MARKET

Activity, employment and unemployment

REGISTERED UNEMPLOYMENT



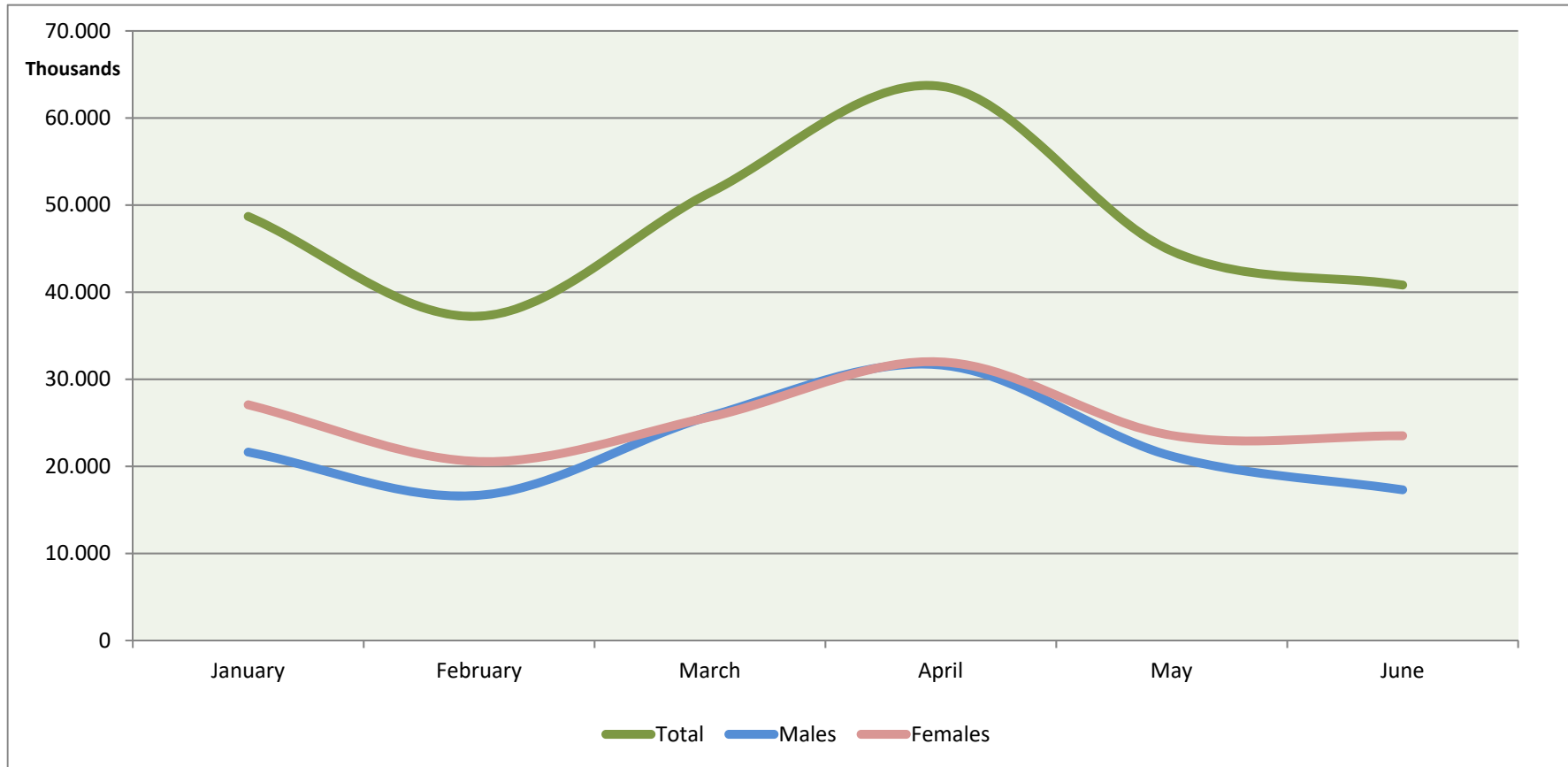
Source: IEFP, Labour Market



LABOUR MARKET

Activity, employment and unemployment

REGISTERED UNEMPLOYMENT - Movement over the months of the first half of 2020



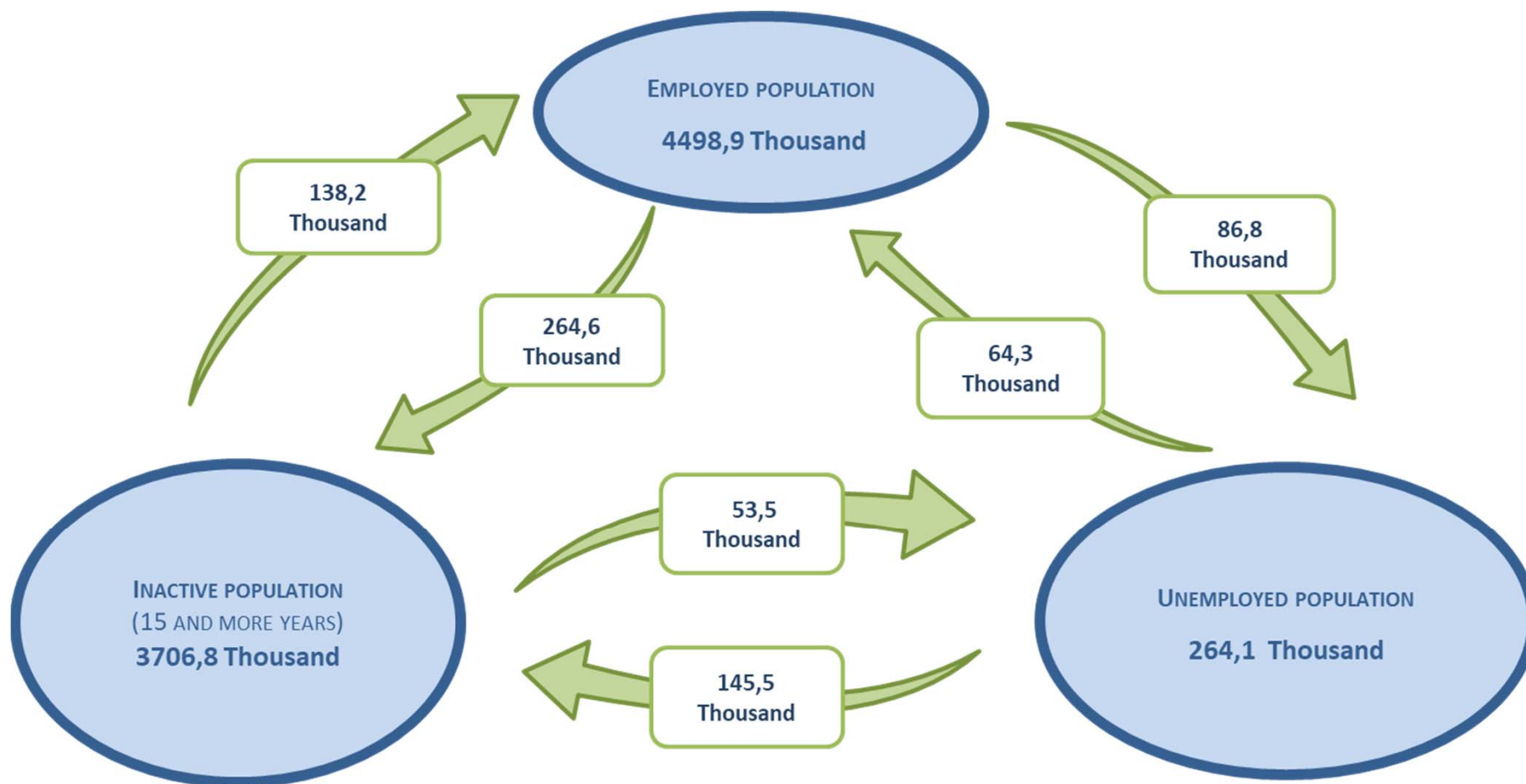
Source: IEFP, Labour Market



LABOUR MARKET

Activity, employment and unemployment

ENTRY AND EXIT FLOWS BETWEEN INACTIVITY, EMPLOYMENT AND UNEMPLOYMENT 2nd Quarter of 2020

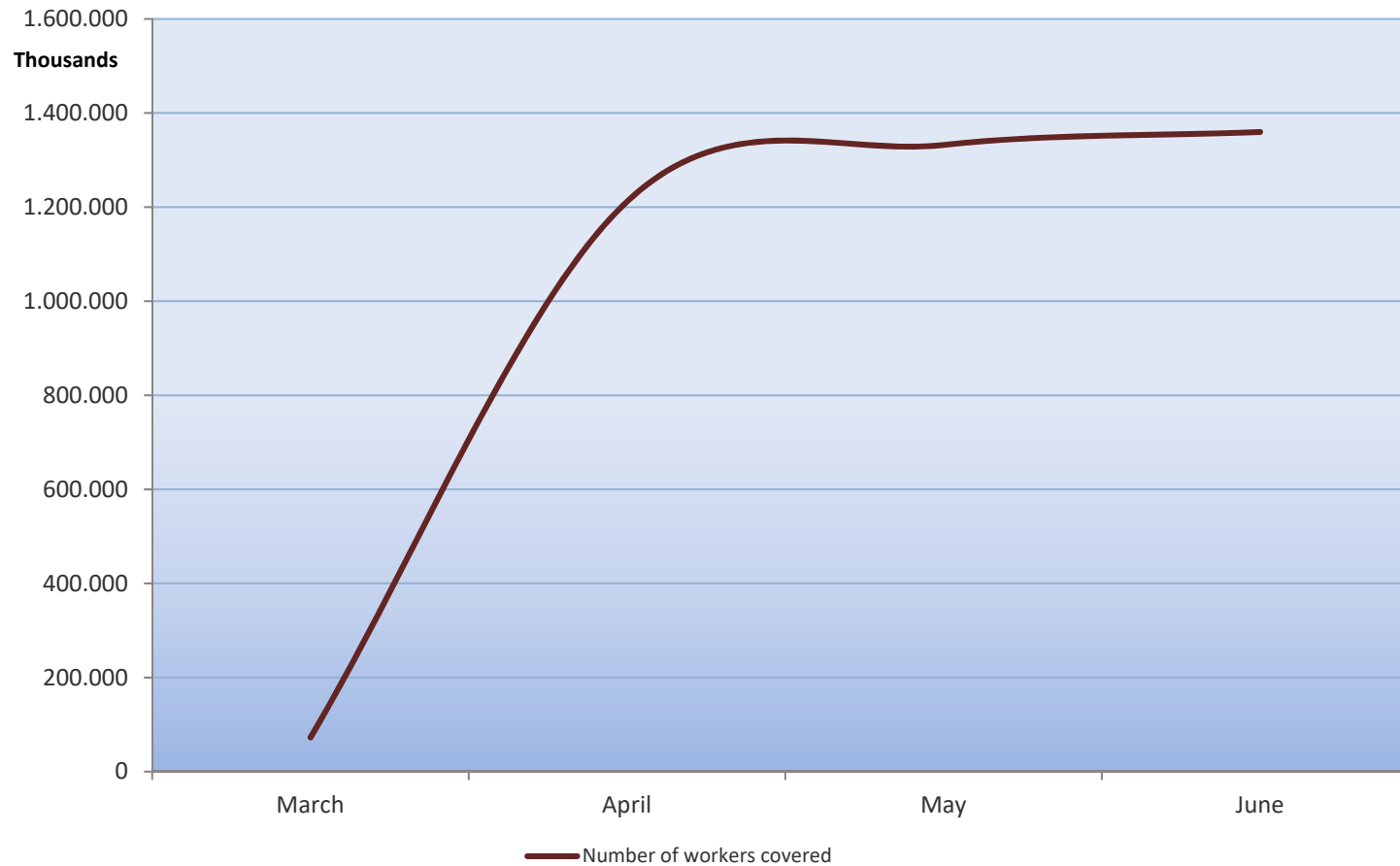


Source: INE, Labour Force Survey



Exceptional support measures in the context of a pandemic (covid-19)

NUMBER OF EMPLOYEES COVERED BY EMPLOYERS WHO APPLIED FOR THE SIMPLIFIED LAY-OFF

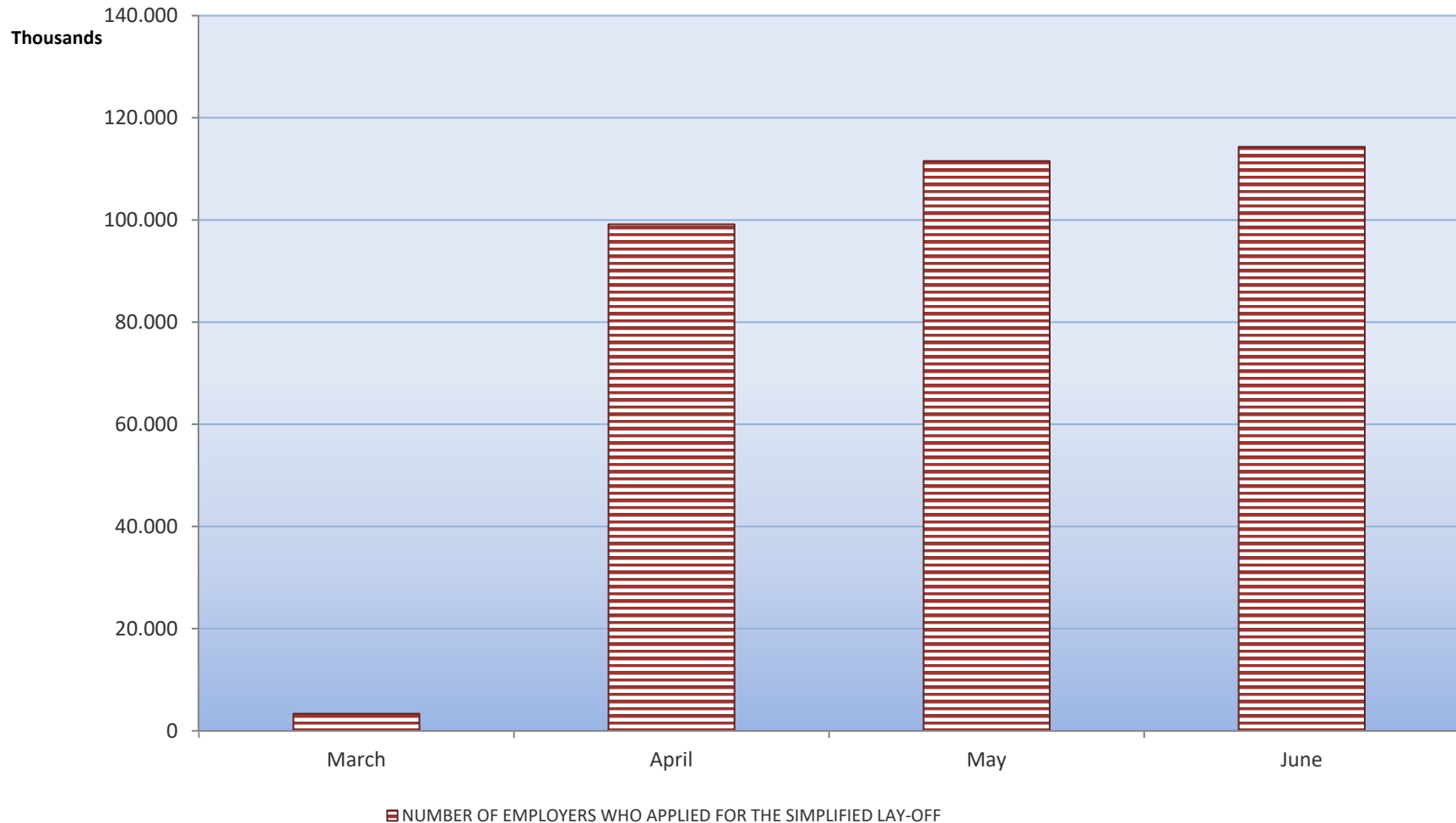


Source: II/MTSSS, Social Security Statistics (www.gep.mtsss.gov.pt)



Exceptional support measures in the context of a pandemic (covid-19)

EMPLOYERS WHO APPLIED FOR THE SIMPLIFIED LAY-OFF

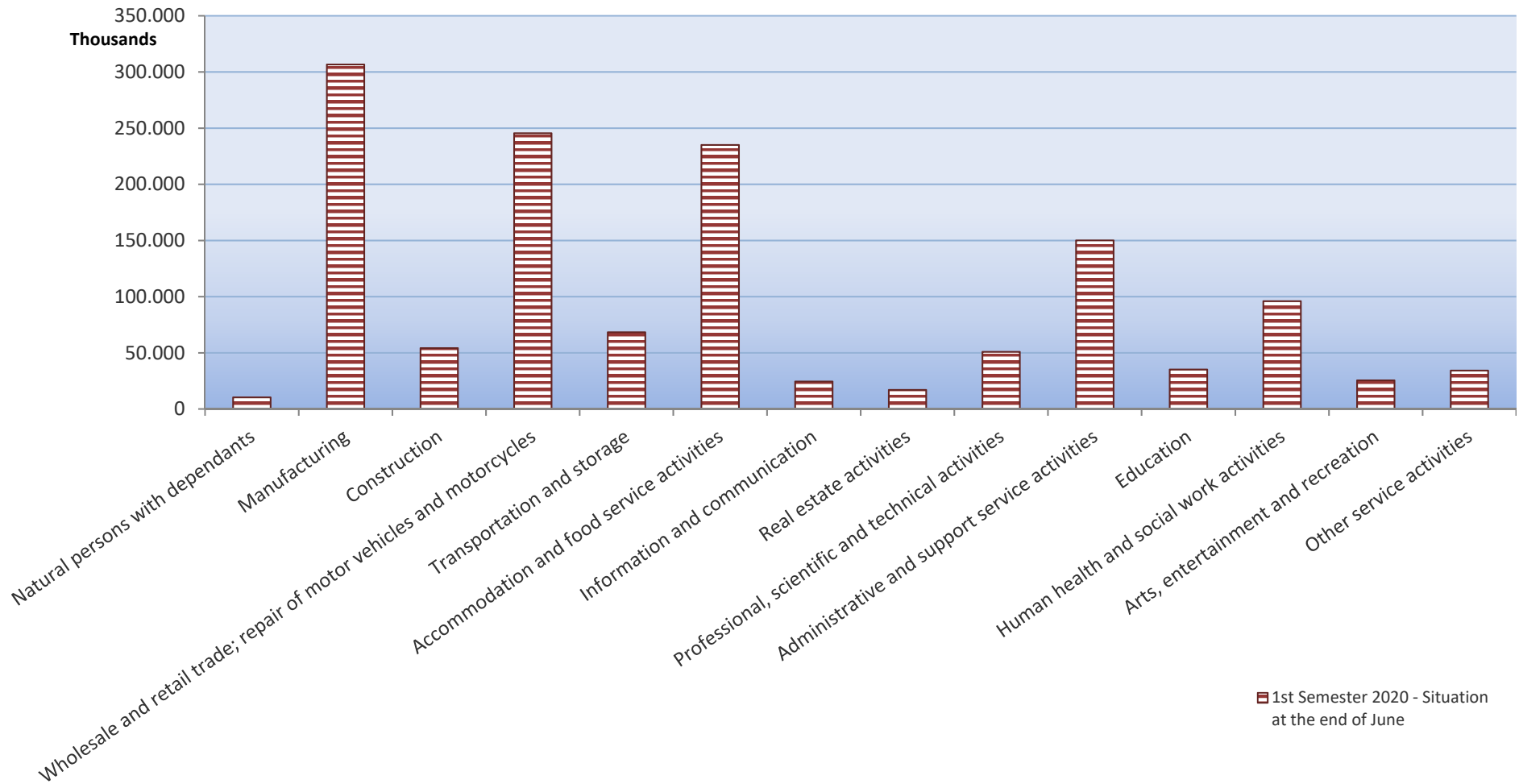


Source: II/MTSSS, Social Security Statistics (www.gep.mtsss.gov.pt)



Exceptional support measures in the context of a pandemic (covid-19)

NUMBER OF WORKERS COVERED BY THE SIMPLIFIED LAY-OFF BY ECONOMIC ACTIVITY



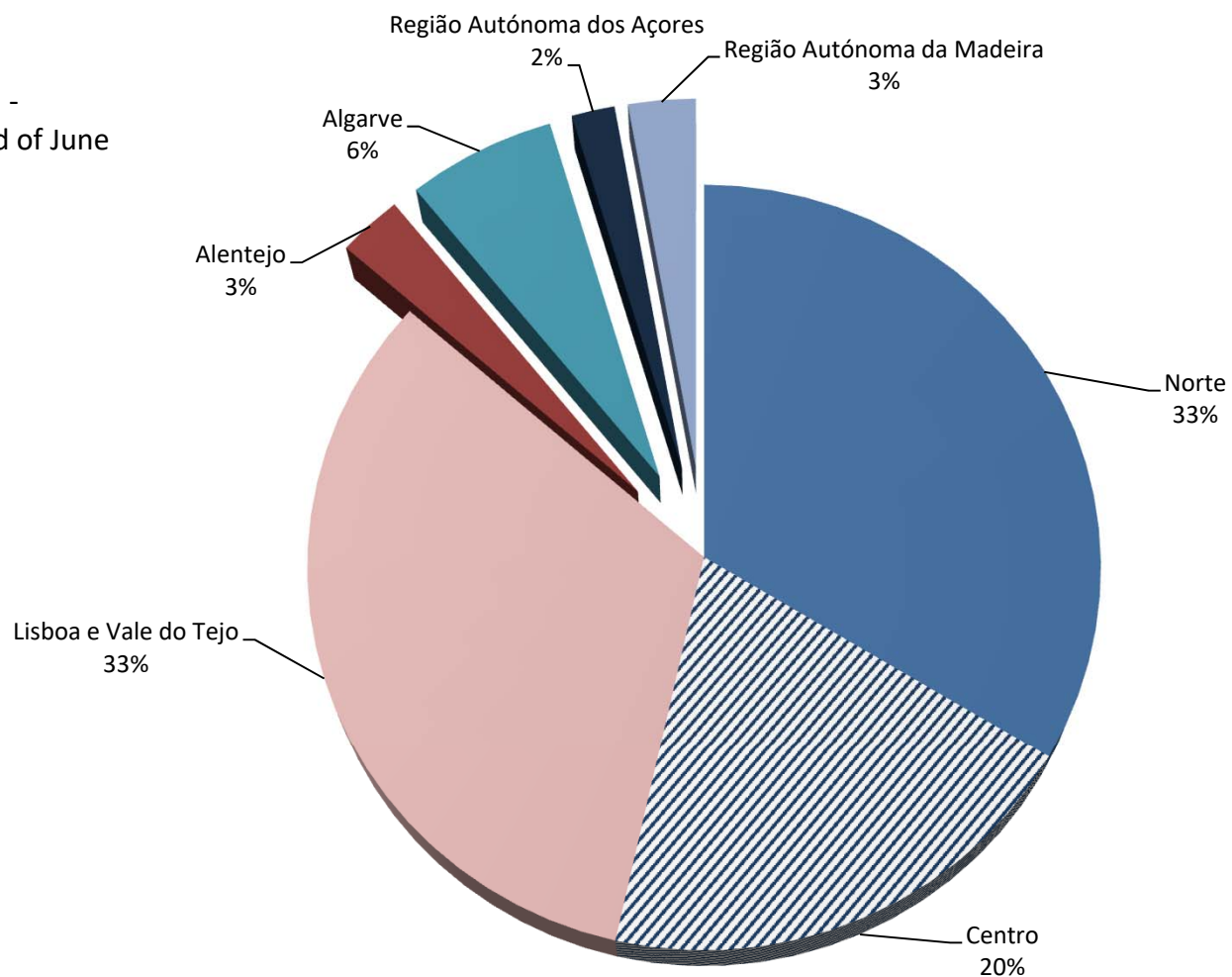
Source: II/MTSSS, Social Security Statistics (www.gep.mtsss.gov.pt)



Exceptional support measures in the context of a pandemic (covid-19)

EMPLOYERS WHO APPLIED FOR THE SIMPLIFIED LAY-OFF BY REGION

1st Semester 2020 -
Situation at the end of June

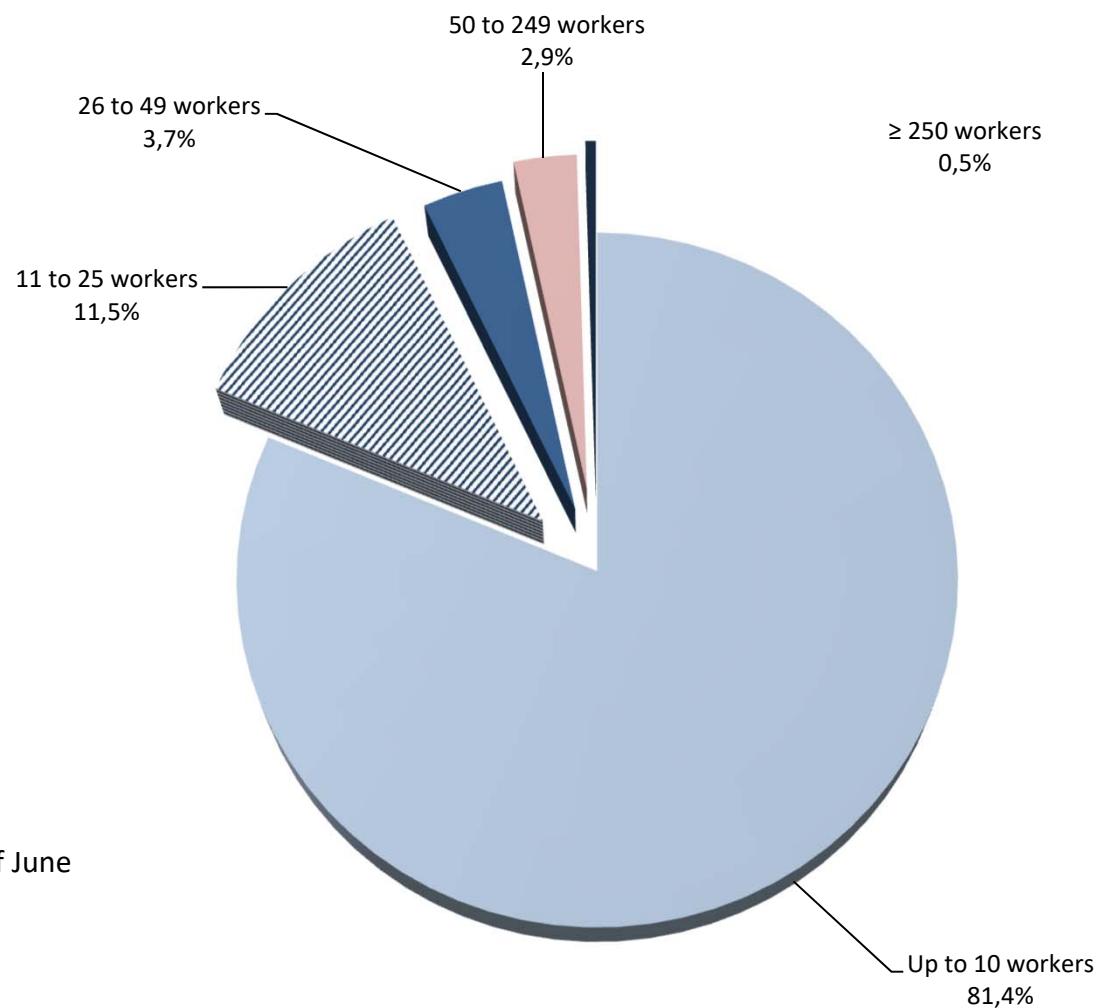


Source: II/MTSSS, Social Security Statistics (www.gep.mtsss.gov.pt)



Exceptional support measures in the context of a pandemic (covid-19)

EMPLOYERS WHO APPLIED FOR THE SIMPLIFIED LAY-OFF BY SIZE OF ENTERPRISE

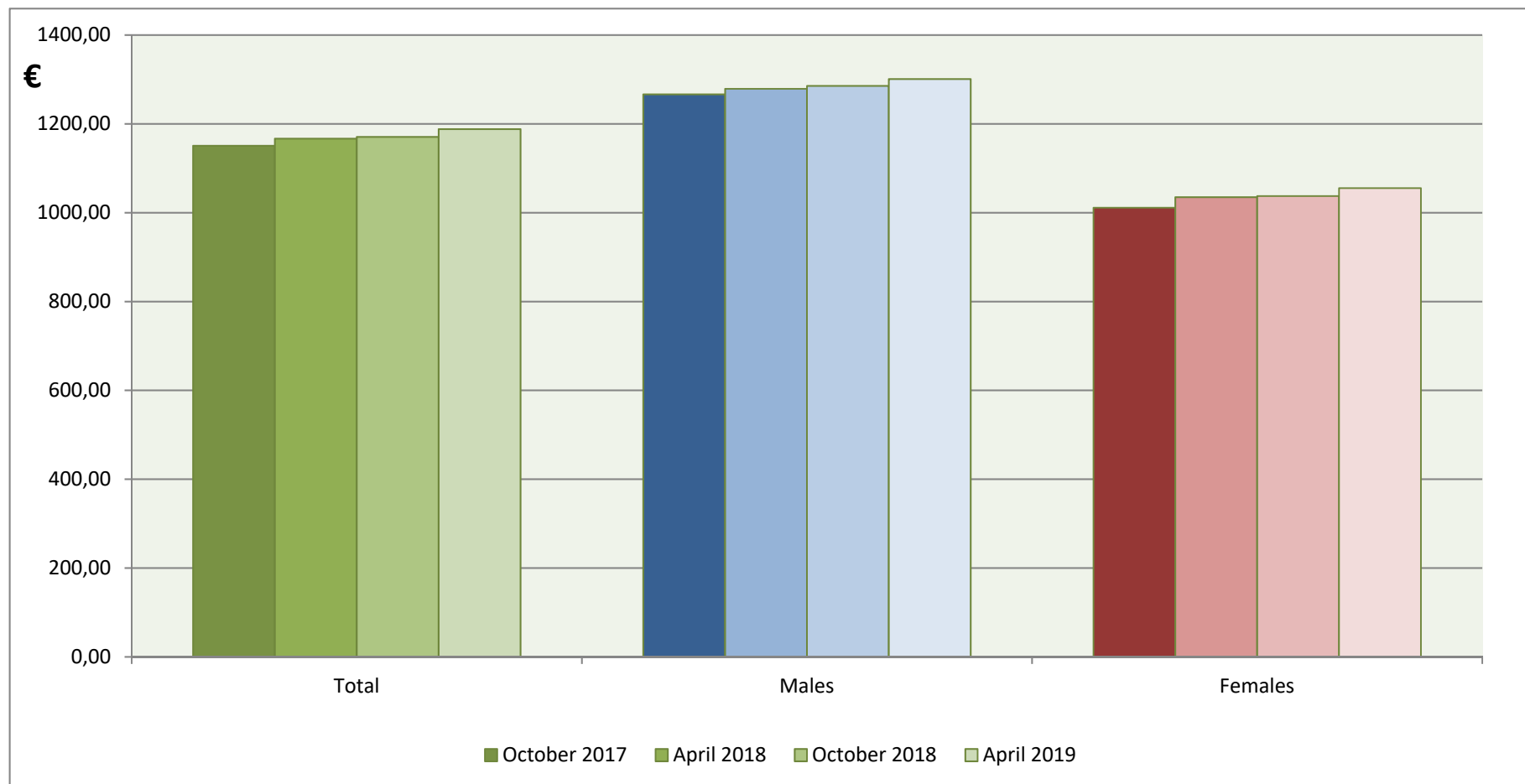


1st Semester 2020 -
Situation at the end of June

Source: II/MTSSS, Social Security Statistics (www.gep.mtsss.gov.pt)

Gains and earnings

EVOLUTION OF THE AVERAGE MONTHLY EARNINGS OF FULL-TIME EMPLOYEES

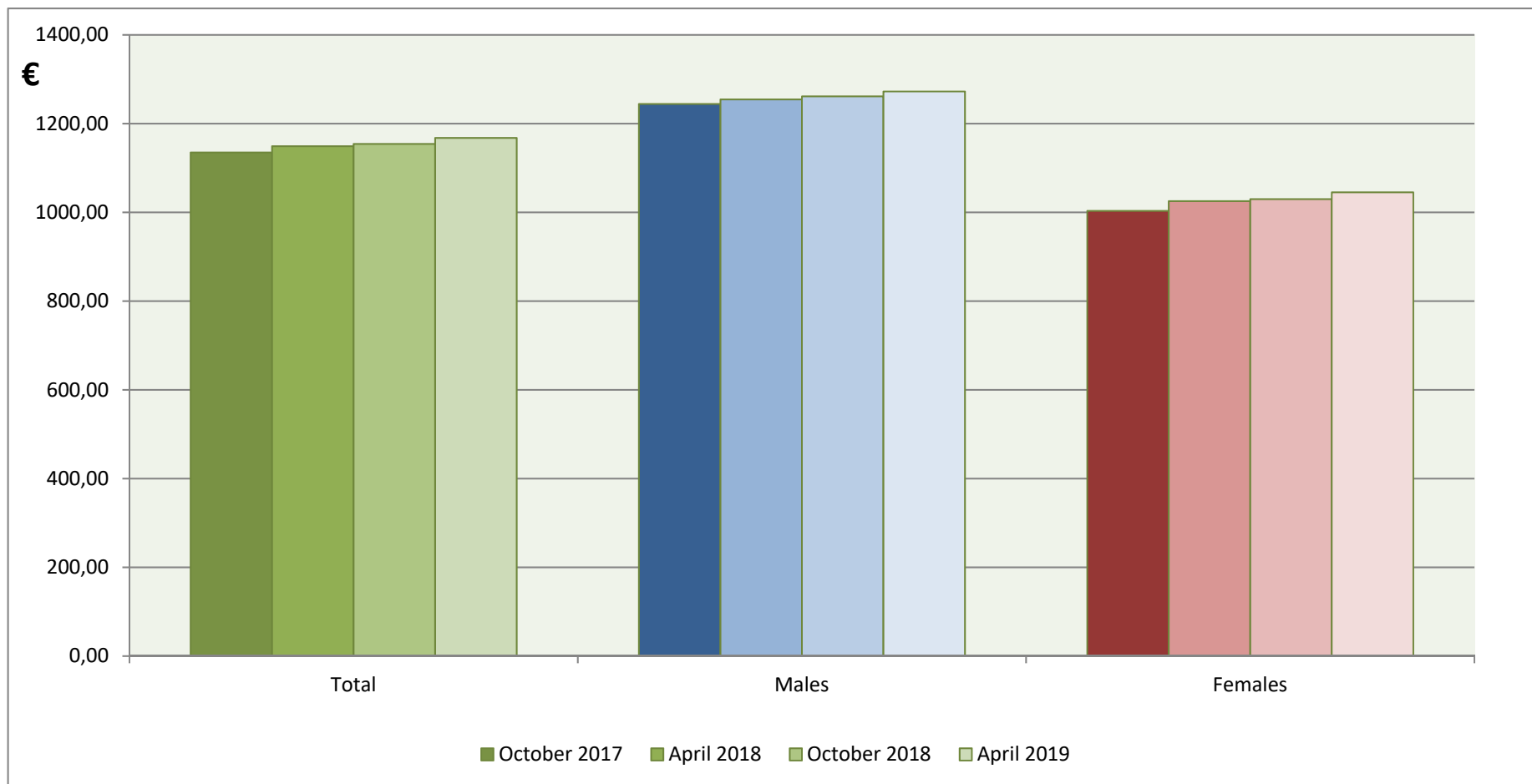


Source : GEP, Earnings and working time survey



Gains and earnings

EVOLUTION OF THE AVERAGE MONTHLY BASIC REMUNERATION PLUS REGULAR INSTALMENTS OF FULL-TIME EMPLOYEES

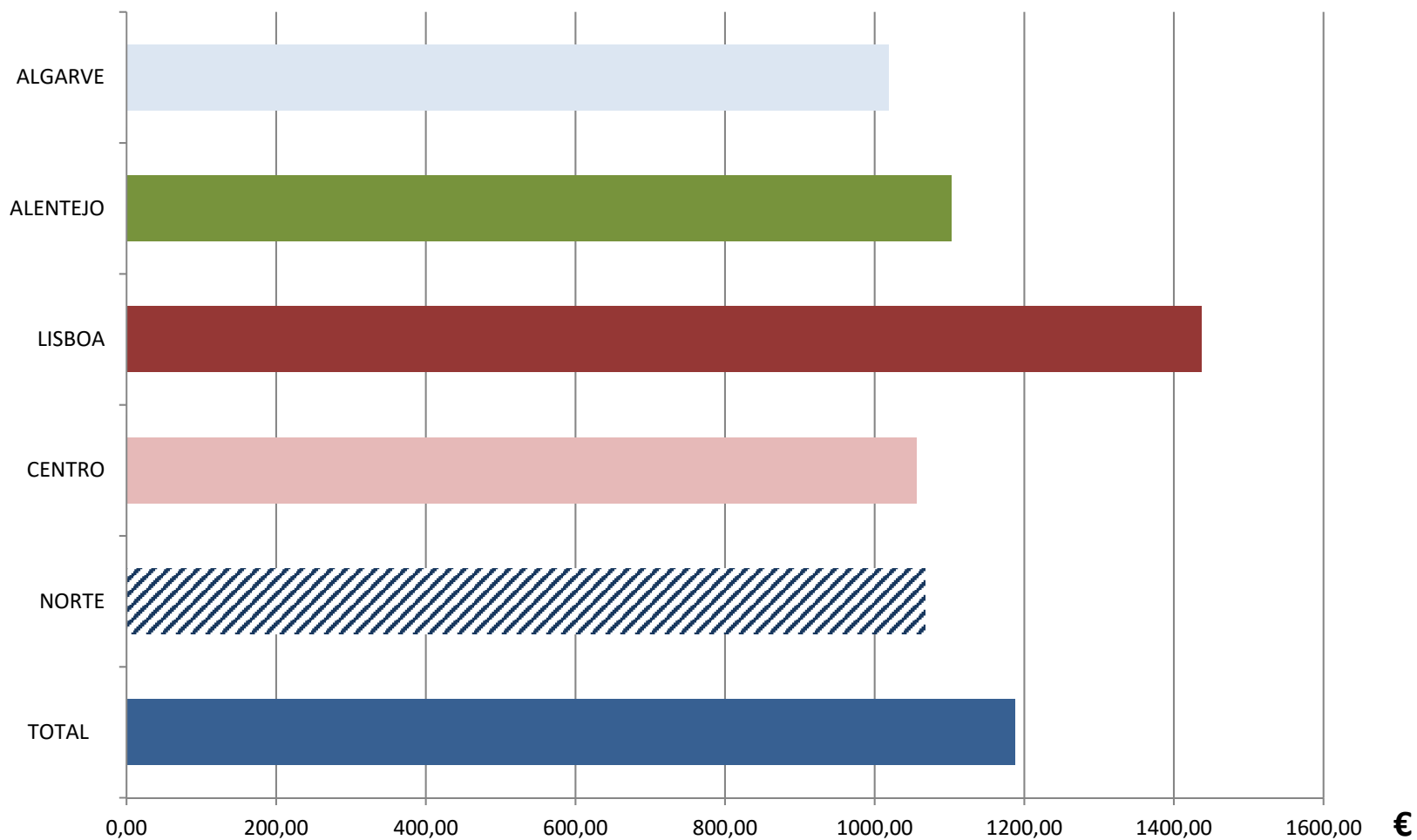


Source : GEP, Earnings and working time survey



Gains and earnings

AVERAGE MONTHLY EARNINGS OF FULL-TIME EMPLOYEES BY REGION – APRIL 2019

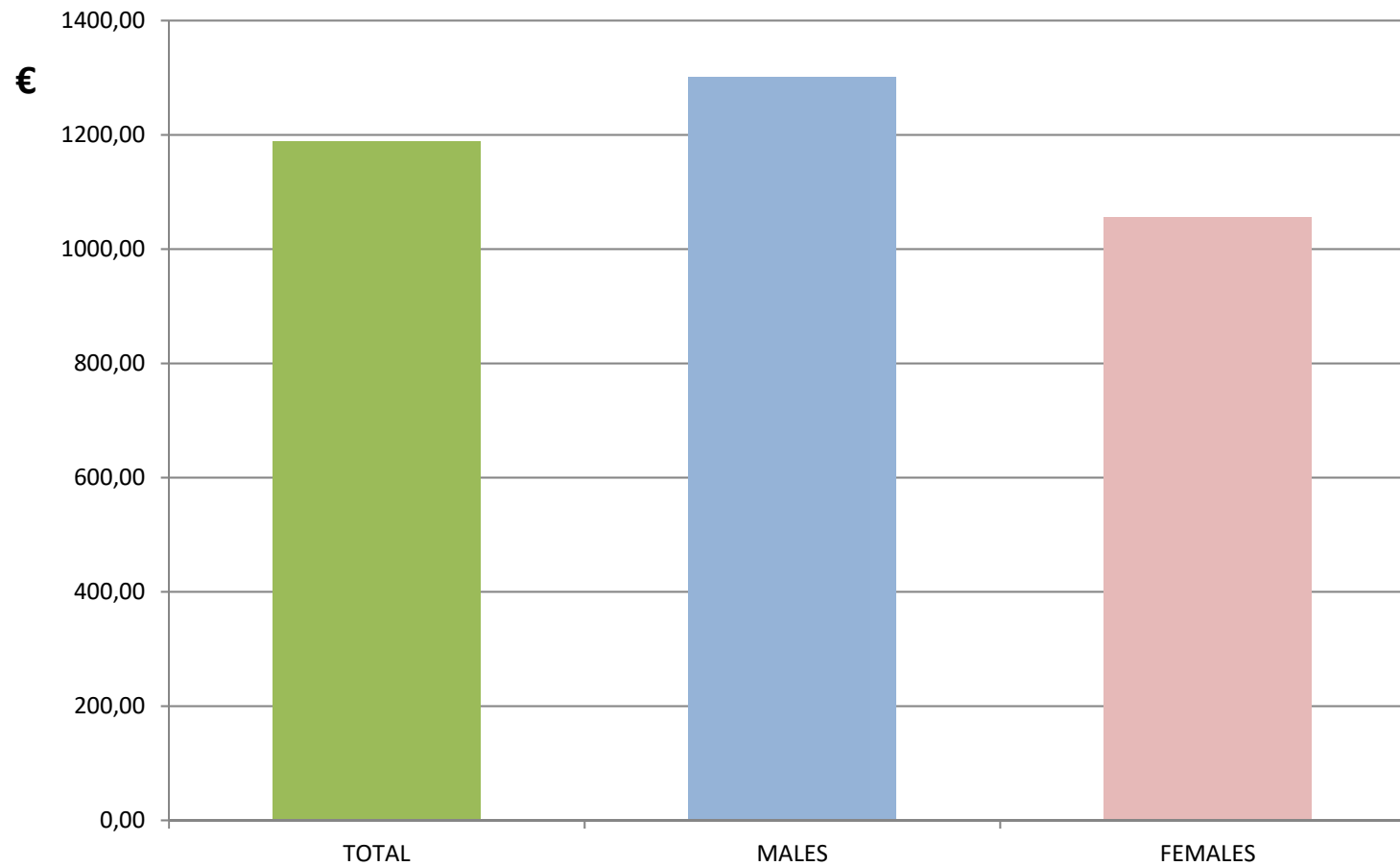


Source : GEP, Earnings and working time survey



Gains and earnings

AVERAGE MONTHLY EARNINGS OF FULL-TIME EMPLOYEES BY SEX – APRIL 2019



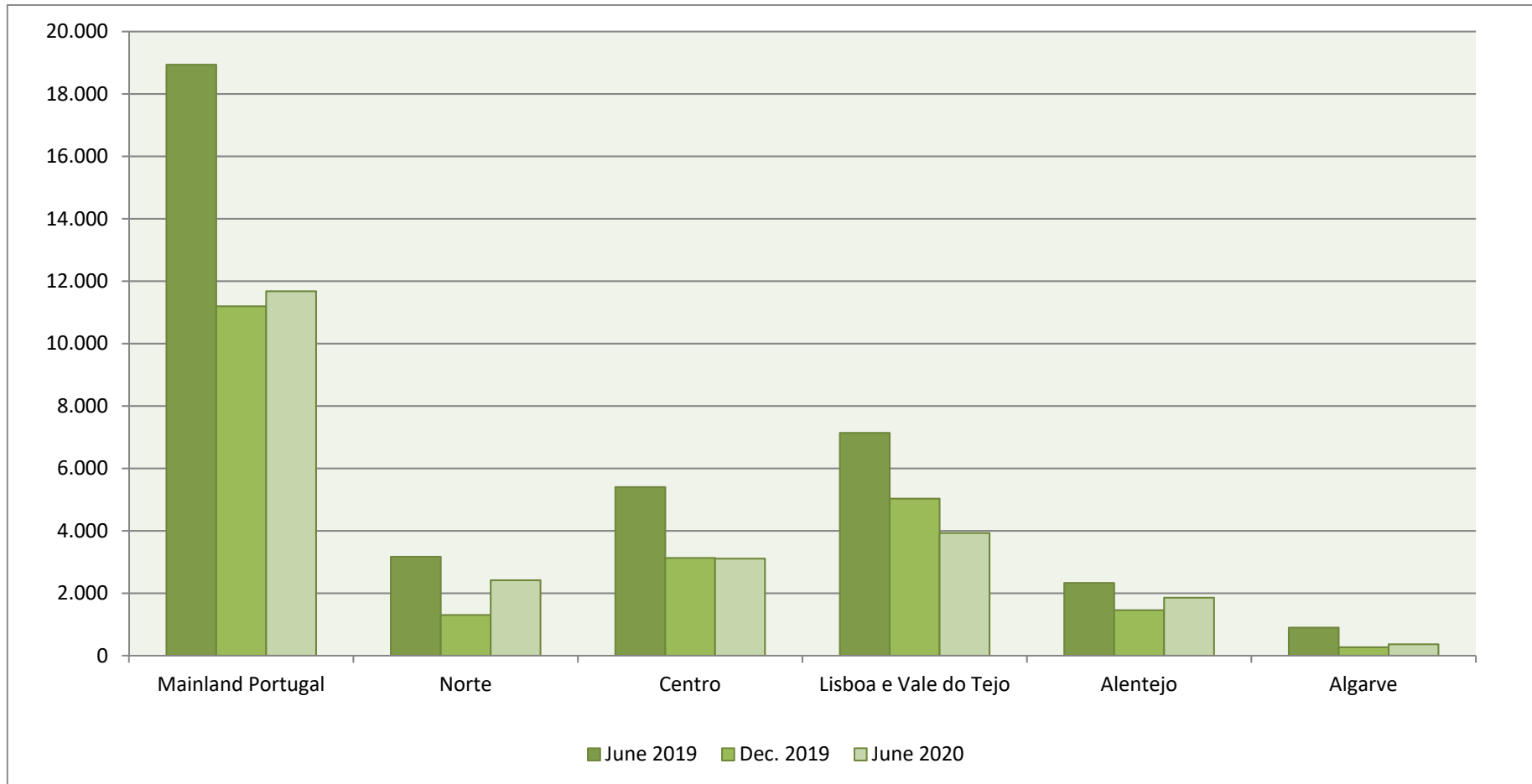
Source : GEP, Earnings and working time survey



LABOUR MARKET

Job offers

JOB OFFERS BY REGION (Situation at the end of the month)



Fonte: IEFP, Labour Market



CENTRE FOR LABOUR RELATIONS

More information at

www.crlaborais.pt